

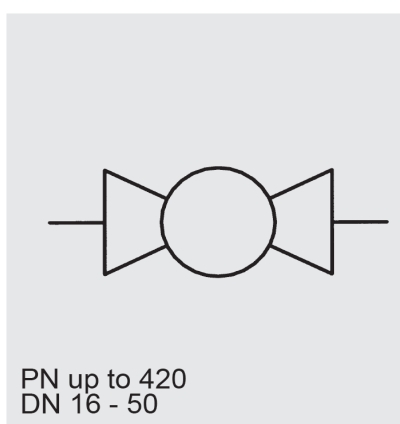
HYDAC INTERNATIONAL



SAE threaded flange ball valves KHBG-F3/6 / KHM-G-F3/6

Model code
(also order example)

KHBG 20 F3 11141 02 X ...



Designation

KHBG = block type ball valve - threaded flange
DN 16 - 25
KHM-G = sleeve type ball valve - threaded flange
DN 32 - 50

Nominal bore (DN)

SAE flange type

F3 = 3000 psi (210 bar)
F6 = 6000 psi (420 bar)

Materials

Housing, connection adapters

1 = steel
3 = stainless steel

Ball, control spindle

1 = steel
3 = stainless steel

Sealing cups

1 = POM

Control spindle seal and connection seal

4 = FKM (Viton)

SAE threaded flange

1 = steel
3 = stainless steel

Handle

02 = aluminium clamped handle, cranked
06 = steel bolt-on handle, cranked
26 = steel bolt-on handle, cranked, long (wrench size 17)

Series

(determined by manufacturer)

Surface protection

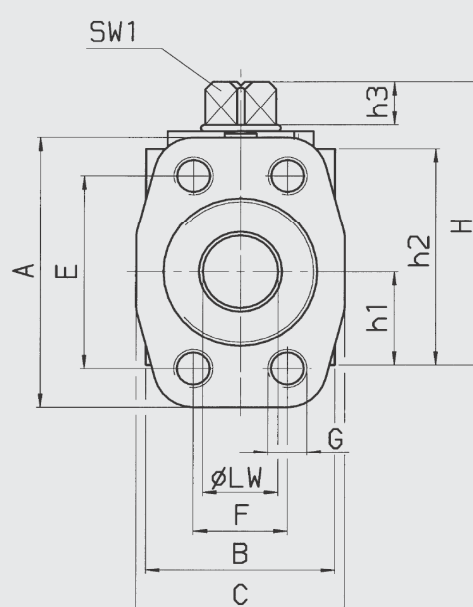
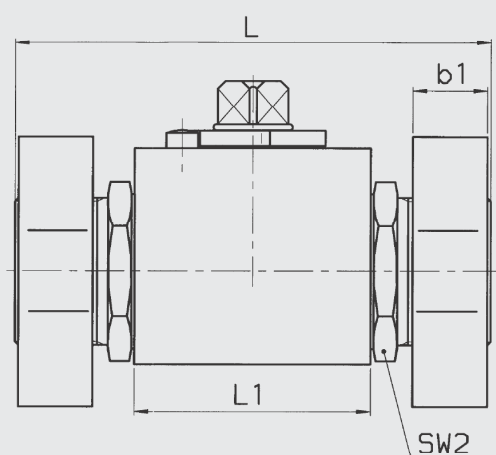
A = zinc-plated, chrome (VI)-free
ZN = zinc-nickel, chrome (VI)-free

Technical specifications

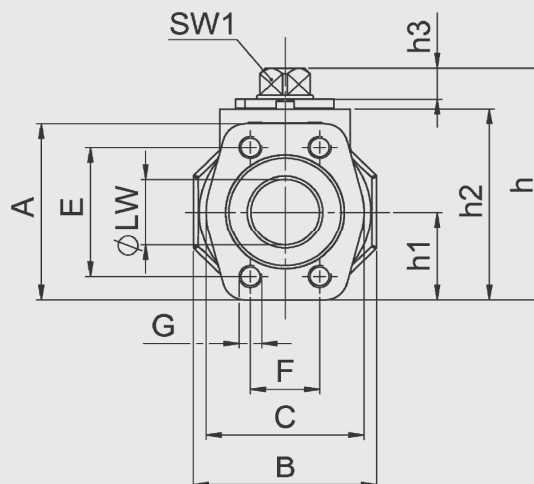
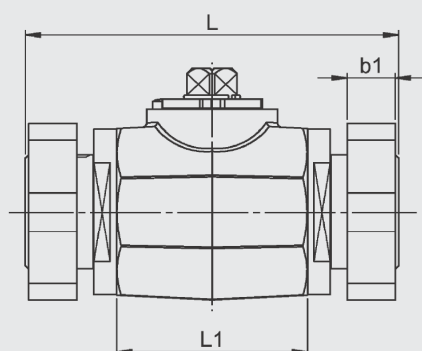
Type of construction:	Block type KHBG DN 16 - 25 Sleeve type KHMG DN 32 - 50
Type of connection:	SAE J518-1 + 2
Flange connections:	SAE threaded flange
Mounting position:	No orientation restrictions
Ambient temperature:	-10 °C to +80 °C
Nominal pressure:	up to 420 bar / 6000 psi
Operating fluids:	Mineral oil to DIN 51524 part 1 and part 2 (other fluids on request)
Temperature of operating fluid:	-10 °C to +80 °C
Spare parts:	Seal kits available on request, see Spare parts List

Dimensions

SAE - threaded flange ball valve
KHBG



KHMG



KHBG / KHMG - F3

Type	SAE size	DN	LW	L	L1	H	h1	h2	h3	B	SW1	SW2
KHBG-16-F3	1/2"	16	13	104	47	63.2	20	46	11	40	12	32
KHBG-20-F3	3/4"	20	19	121	60	74.8	24.5	57	11.6	49	14	41
KHBG-25-F3-XL	1"	25	25	148	65	82.6	29.5	65	11.6	58	14	50
KHMG-32-F3-XL	1 1/4"	32	30	172	83.4	106.2	41	87.7	12	82	17	60
KHMG-40-F3-XL	1 1/2"	40	38	177	91	118.2	47	99.7	12	94	17	70
KHMG-50-F3-XL	2"	50	48	196	100	134.2	55.5	115.7	12	111	17	80

Flange F3

Type	b1	A	C	E	F	G	Nominal pressure [MPa]	Weight [kg]
KHBG-16-F3	16	54	46	38.1	17.5	M8	35	1.1
KHBG-20-F3	18	65	52	47.6	22.3	M10	35	1.9
KHBG-25-F3-XL	19	70	59	52.4	26.2	M10	35	2.4
KHMG-32-F3-XL	21	79.5	73	58.7	30.2	M10	28	3.8
KHMG-40-F3-XL	25	93.8	83	69.9	35.7	M12	21	6.3
KHMG-50-F3-XL	26	102	97	77.8	42.9	M12	21	9.6

KHBG / KHMG - F6

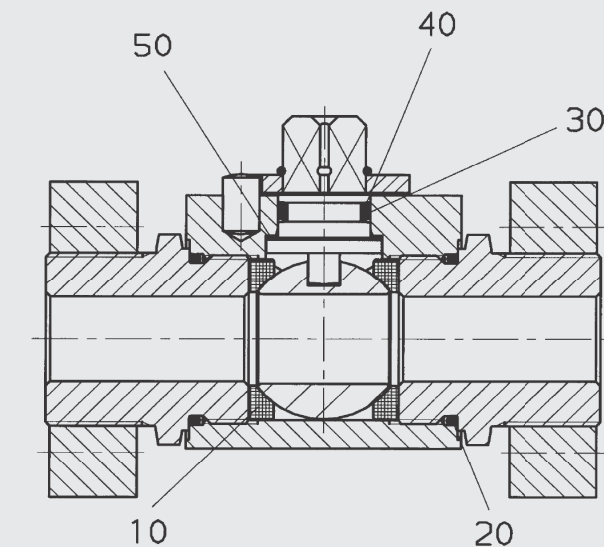
Type	SAE size	DN	LW	L	L1	H	h1	h2	h3	B	SW1	SW2
KHBG-16-F6	1/2"	16	13	104	47	63.2	20	46	11	40	12	32
KHBG-20-F6	3/4"	20	19	121	60	74.8	24.5	57	11.6	49	14	46
KHBG-25-F6-XL	1"	25	25	148	65	82.6	29.5	65	11.6	58	14	50
KHMG-32-F6-XL	1 1/4"	32	30	172	83.4	106.2	41	87.7	12	82	17	60
KHMG-40-F6-XL	1 1/2"	40	38	177	91	118.2	47	99.7	12	94	17	70
KHMG-50-F6-XL	2"	50	48	196	100	134.2	55.5	115.7	12	111	17	80

Flange F6

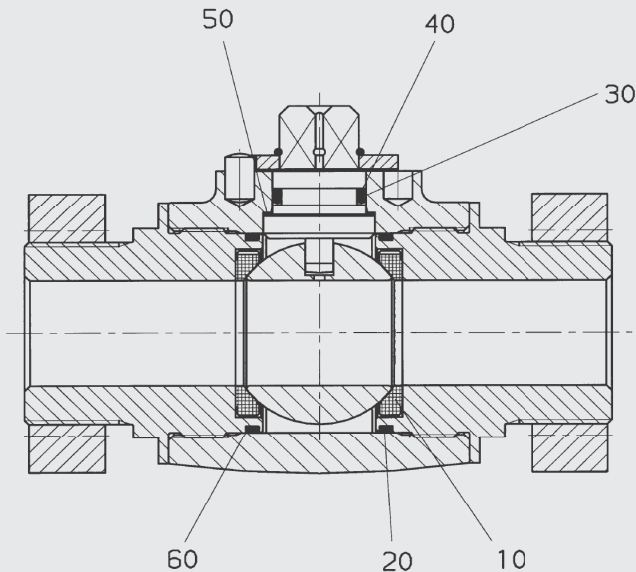
Type	b1	A	C	E	F	G	Nominal pressure [MPa]		Weight [kg]
							Steel	Stainless steel	
KHBG-16-F6	16	56.5	48	40.5	18.2	M8	42	40	1.2
KHBG-20-F6	19	71.4	60	50.8	23.8	M10	42	35	2.0
KHBG-25-F6-XL	24	81	70	57.2	27.8	M12	42	35	3.0
KHMG-32-F6-XL	27	95.3	78	66.6	31.8	M14	42	35	4.7
KHMG-40-F6-XL	30	113	95	79.3	36.5	M16	42	35	7.3
KHMG-50-F6-XL	35	133	114	96.8	44.5	M20	42	35	11.5

Spare parts

(Seal kit)
KHBG, DN 16 - 25



KHMG, DN 32 - 50



NOTE

The information in this brochure relates to the operating conditions and applications described. For applications and operating conditions not described, please contact the relevant technical department.

The operator is always responsible for determining the product suitability for the specific application. Quantified values for product characteristics are average values for a new product that undergo a time deterioration process.

Subject to technical modifications and errors.

Seal kit	Order no. = part no.
DN 16	703003
DN 20	703016
DN 25	700978
DN 32	703025
DN 40	703015
DN 50	701293